

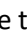



## Liebherr MKv 3913 alarm codes

### Door open alarm

When the door is opened, the LED  lights up and the temperature display begins to flash.


When the door has been left open for more than 60 seconds, the LED  begins to flash, and  and the temperature indication flash alternately in the display.

The audible warning signal sounds.

If the door has to stay open for longer in order to insert items to be cooled, cancel the audible warning signal by pressing button .

### Alarm messages

#### 1. LED flashes in the display

If  appears in the display, the appliance has a fault. Consult your nearest customer service point.

#### 2. LED flashes in the display; the display reads HI or LO


The interior is too warm (HI) or too cold (LO). The audible warning signal sounds.

#### 3. HA / HF / flashes in the display

There has been a power cut (HF) of some length or the interior was too warm or too cold (HA) during a certain period of time. Up to three alarm events can be stored and called up.

#### 4. LED flashes in the display; the display reads AFr

The temperature near the reference sensor was too low for a certain period of time.

Cancel the alarm status AFr. Press  +  for 5 seconds.

## Malfunctions

You may be able to rectify the following faults by checking the possible causes yourself:

- **Appliance does not function:**

- Is the appliance switched on?
- Is the plug correctly fitted in the mains socket?
- Is the fuse intact?

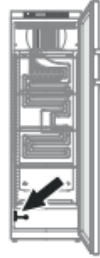
- **The temperature is not low enough:**

- Is the ventilation system working properly?
- Is the appliance set up too close to a heat source?

- **The display temperature is significantly lower than the set temperature.** Check the following:

- Are the items located too close to the reference sensor? →

The distance between the items and the reference sensor housing must be at least 5 cm.

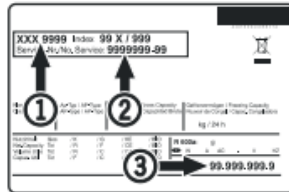


- Are the grid shelves fully covered with cartons or drawers?

This would prevent air circulation inside the appliance and result in a much colder temperature value being measured and displayed.

Contact the customer service department if the displayed temperature is significantly lower for more than 1 day to ask about information for an individual adjustment.

If none of the above causes apply and you cannot rectify the fault yourself, contact the nearest customer service department stating the type designation ①, service number ② and appliance number ③ as indicated on the type plate.



The position of the type plate is shown in the section entitled **Description of the appliance.**

## Possible error messages in the display

Error code	Error	Action
E0, E1, E2, rE	Temperature sensor defective	Contact the customer service department
EE, EF	Electronic control system error	Contact the customer service department
dOr	Appliance door open for too long	Close appliance door
HI	Temperature inside appliance too high (too warm)	Check that the door has been closed properly. If the temperature does not drop, contact the customer service department.
LO	Temperature inside appliance too low (too cold)	Contact the customer service department
Etc		Reset the real time clock (see "Setting the real time clock")
HF, HA	There has been a power cut of some length or the interior was too warm or too cold during a certain period of time.	See <b>Calling up stored alarm events and reading the temperature progression</b>
AFr	Temperature around the reference sensor < 0°C	Cancel the message - see "Alarm messages".  Contact the customer service department if the message reappears on a regular basis.
btE	Back-up Battery error	Contact the customer service department
btP	Power failure alarm	It will go out again when mains voltage is applied. Make a decision on what you wish to do with the items stored in the appliance.